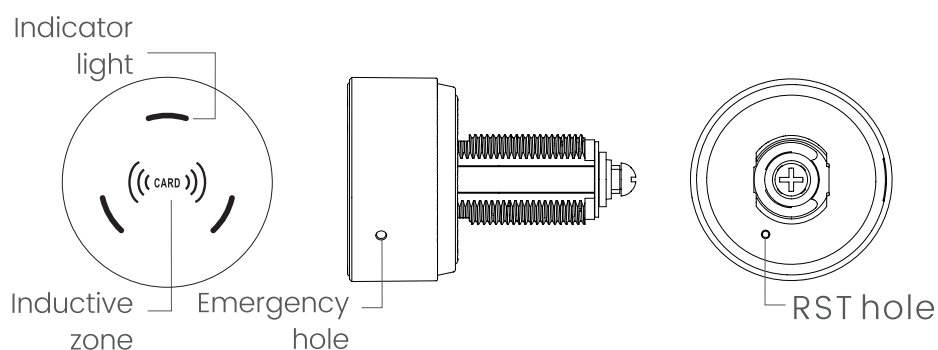




# Keyfree 300

## RFID Lock Instructions



## 1. Types of Cards

### Management Card (up to 3)

- For public and private mode settings, adding/deleting cards, and unlocking.

### Main Card (up to 2)

- Used for public and private modes; allows unlocking.

### Guest Card (up to 10)

- Used in private mode only; allows locking/unlocking.

### Temporary Card (only 1)

Used in public mode; allows one-time unlocking.

### Mode Card (only 1)

Switches between public and private mode.

## 2. How to Operate

By default, the lock is set to private mode.

### Unlock

Use a verified card near the induction zone. Upon hearing a long beep and seeing the green LED light up, rotate the lock within 3 seconds to unlock.

### Lock

Rotate the lock back to its locked position.

### Note

A “Dididi” continuous beep means the card is unverified.

## 3. Setting Cards

### Setting a Management Card

1. The factory database is empty.
2. The first card used will automatically become the **management card**.
3. A “di” sound confirms successful setup.

### Setting a Guest Card

1. Use the **management card 3 times**.
2. The green LED will flash.
3. Present a new card to add it as a **guest card**.
4. A “di” sound confirms the setup.

### Setting a Main Card

1. Use the **management card 4 times**.
2. The green LED will flash.
3. Present a new card to add it as a **main card**.
4. A “di” sound confirms the setup.

### Note

Only in private mode can you set Guest and Main cards.

## 4. Deleting Cards

### Option 1: Using the Management Card

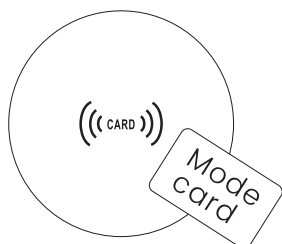
1. Use the management card 6 times.
2. A “di di” sound confirms deletion.

### Option 2: Using the Reset (RST) Hole

1. Use a pin to press the RST hole.
2. A “di di” sound confirms deletion.

## 5. Switching Modes

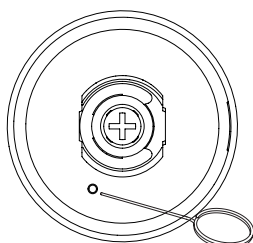
The lock has two modes: Public Mode and Private Mode. By default, it is set to Private Mode.



### Option 1: Using the Mode Card

#### 1. Hold the Mode Card near the induction zone.

- Private Mode Activation: One long “di” sound.
- Public Mode Activation: Three long “di” sounds.



### Option 2: Using the RST Hole

1. Remove the batteries.
2. Insert a pin into the RST hole and hold it.
3. While holding the pin, reinstall the batteries.
4. After 3 seconds, listen for the sound:
  - Private Mode: One long “di” sound.
  - Public Mode: Three long “di” sounds.
7. Release the pin.

## 6. Public Mode Operations

### Setting a Temporary Card

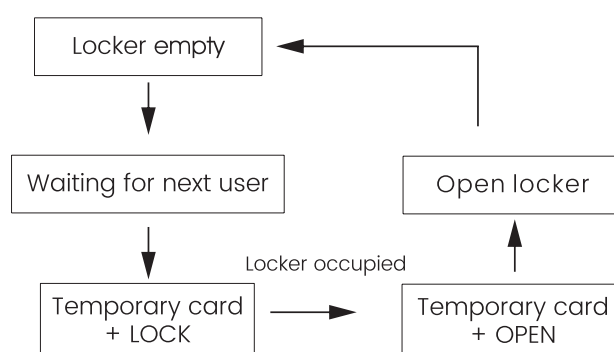
1. Use a card near the induction zone.
2. A “di” sound confirms setup.

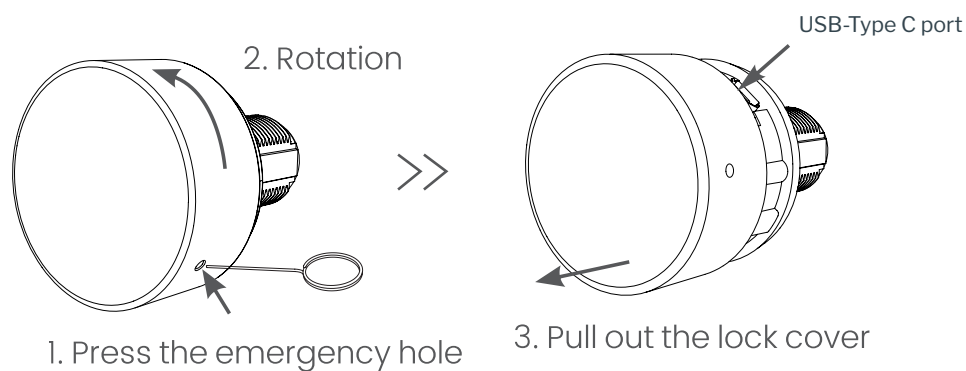
### Unlocking

1. Use the verified temporary card.
2. A long “di” sound and green LED indicate unlocking.
3. The temporary card is now invalid.

### Notes

- Management cards can unlock and delete temporary cards.
- A flashing green LED every 3 seconds means the lock is already in use.
- Temporary cards are one-time-use only.





## 7. Installation & Battery Replacement

### Battery Installation/Replacement

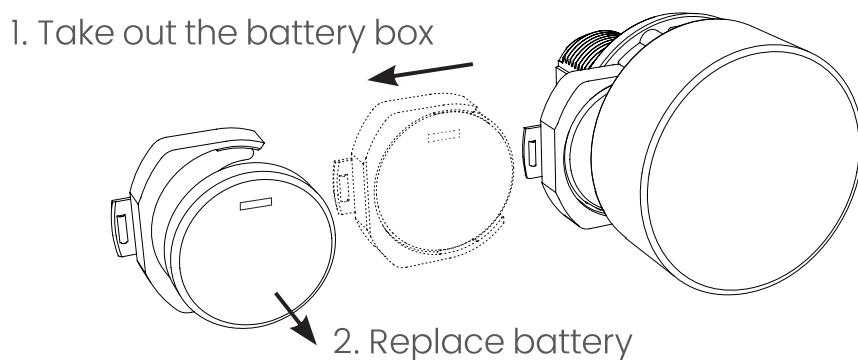
1. Press the emergency hole.
2. Pull out the lock cover.

### Emergency Power Supply

If the battery is low, use an external USB power supply to unlock.

### Low Battery Warning

- When the buzzer rings the “chord note” and unlock normally, means battery at low voltage, please replace the battery in time, the lock may not work when the voltage is low
- Replace the CR2450 battery immediately to avoid malfunctions.



## 8. Technical Specifications

Operating Temperature:  $-20^{\circ}\text{C} \sim +55^{\circ}\text{C}$

Storage Temperature:  $-40^{\circ}\text{C} \sim +55^{\circ}\text{C}$

Humidity: 10% ~ 85% RH

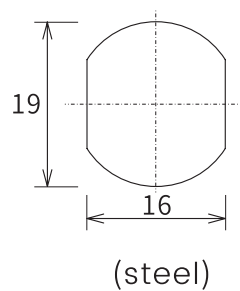
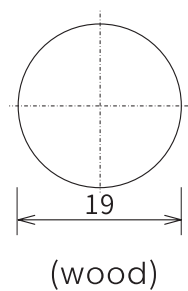
Static Current:  $<30\mu\text{A}$

Dynamic Current:  $<130\text{mA}$

Power Supply: CR2450 Battery

Battery Life: Approx. 1 year

### ➤ Fixing hole unit:mm



### ➤ Install step

